

INNOVATION

FULLERTON BUS & INDUSTRY - F.E. OLDS
8-25-1954

OLDS PLANT RECENTLY COMPLETED — Already employing 150 skilled workmen, the F. E. Olds and Sons factory, shown above, on S. Raymond, is turning out one-tenth of the nation's metal musical instruments. The plant, which has for several months been absorbing departmental operations from the Los Angeles plant, will eventually handle all of the company's production. (News Tribune Photo)

SKILLED CRAFTSMEN WORK AT OLDS COMPANY

Musical Instruments Made Here Used Throughout World

Early in June of this year the first musical instrument was completed in the new F. E. Olds Company plant on S. Raymond. Today there are 150 skilled craftsmen turning out an average of 120 handmade instruments per day. Within two years, the company will employ between 300 and 400 technical tradesmen in the Fullerton plant, completing the gradual exodus from their Los Angeles plant.

Now 40 years old, the company distributes throughout the entire world. Manufacturing a complete line of metal wind instruments, considered one of the highest grades, the Olds company frequently hears reports that various school boards, when asking for bids on band instruments, frequently specify that they must be "of Olds standard or better."

With an average yearly production of 23,000 instruments, almost every band in southern California contains at least one Olds product. The question that often arises, "Where do all the instruments you manufacture go?" is easily answered by the fact that there are approximately 50,000 bands in the United States. More than half of them contain pieces from Olds.

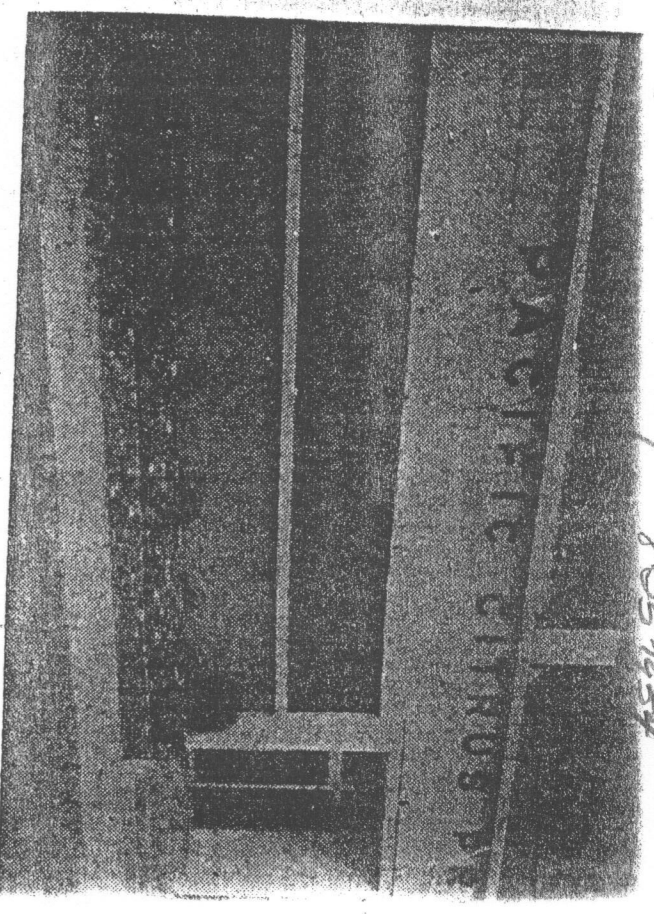
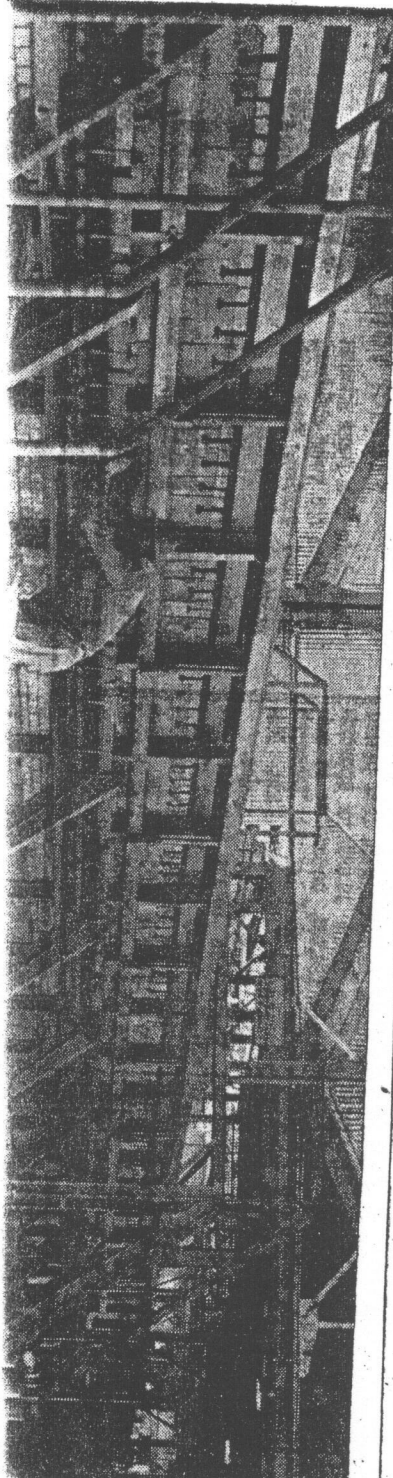
F. A. Reynolds, vice-president and general manager, stated that 95 per cent of the company's Los Angeles employees have moved to the Fullerton area to stay with the company, and that at least 50 per cent of them have already purchased homes in Orange County.

R.B. Olds, president of the company, has fairly recently moved to Sunny Hills, as have Reynolds and his brother, H.A. Reynolds, general superintendent of all operations. Alfred J. Abrams, controller, has become a resident of Anaheim.

F.A. Reynolds, making an exhaustive search around the greater Los Angeles area before deciding to relocate in Fullerton, said there were several reasons for choosing this city. In addition to its proximity to transportation facilities while maintaining a suburban atmosphere, Reynolds remarked "One of my objectives of locating in Fullerton was to recruit local youth to be permanent employees for many years to come."

Every one of the instruments made by the Olds Company is handmade, from the time the flat metal sheets and long tubing roll into the plant until they are finished, smooth, gleaming, finely etched, and in perfect pitch. Required to do this work are dozens of different high skilled workmen, experts in the fields of tool and die machine tools, tube bending, tube drawing, sheet metal, spinning, brazing, silver soldering, hand engraving, polishing, silver and gold plating, and lacquering.

Now in its final stages of completion the Fullerton plant will soon be in full production. The move has taken several months and has been made in gradual stages in a successful attempt to keep production going at regular levels. It is an enviable record, considering, in the past seven years, the F.E. Olds Company has never had slack time or a cut-back in production.



LAUNER ROOM
FULLERTON PUBLIC LIBRARY
353 W. COMMONWEALTH AVE.
FULLERTON, CA 92832

DAIT

**This is the plant
In Fullerton town
That blends the firm**